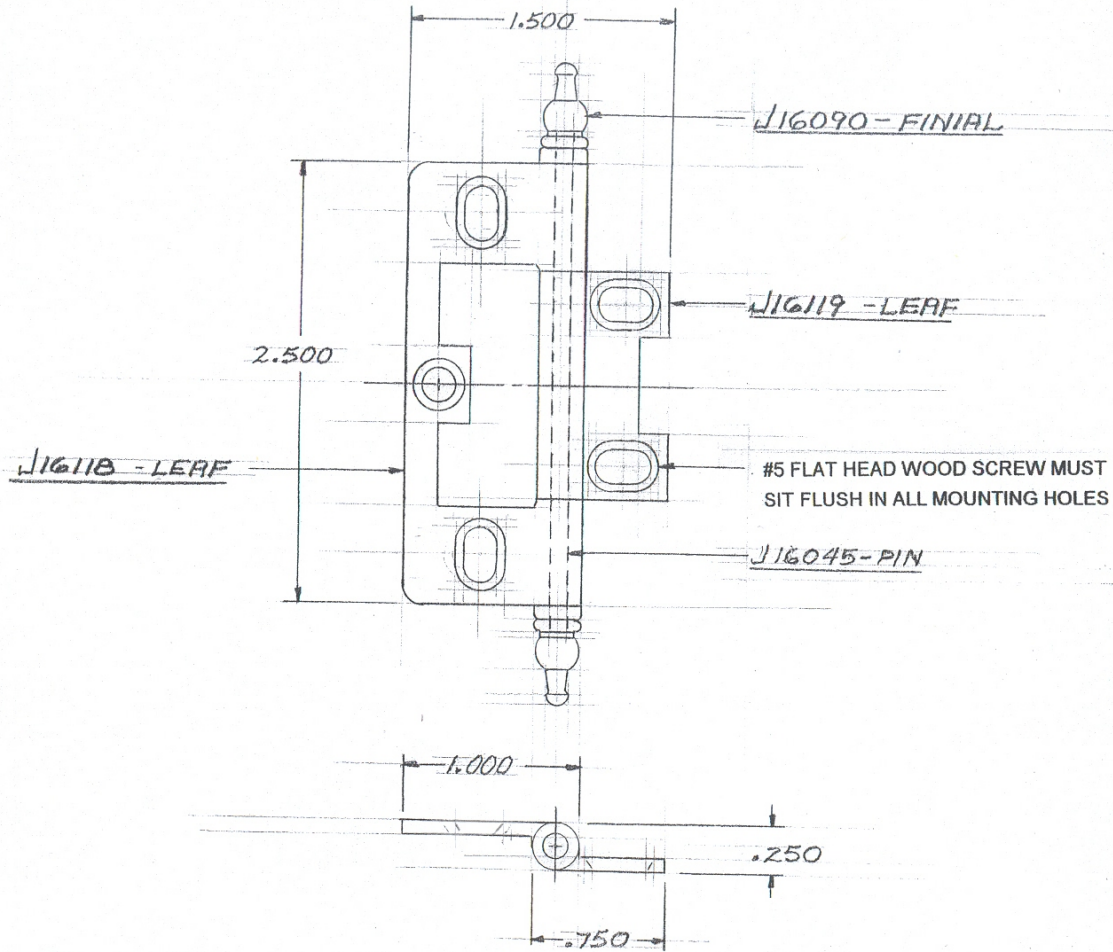


X-Number

Print No: J16122



J16089-SIMILAR (STAMPED)

NOTICE: Jamestown Furniture Hardware Corp. claims proprietary rights in the information disclosed on this drawing. It is issued in confidence for engineering only and may not be reproduced or used to manufacture anything shown herein without direct written permission from Jamestown Furniture Hardware Corp.

Revisions

Tolerance Unless Otherwise Specified		Jamestown FURNITURE HARDWARE CORP. 137 Water St., Jamestown, N.Y. 14701 Phone: 716-664-4321 · Fax: 716-664-4309	
Cast Brass: ±1/32	Zinc/Brass Die Cast: .XX±.010 .XXX±.005	Description	<u>HINGE ASSEMBLY</u>
Sheet Metal/Turnings/Extrusions FRACTIONS ±1/64 .XX±.010 .XXX±.005		CAD Print No.	<u>J16122</u>
Forging: FRACTIONS ±1/64 .XX±.010 .XXX±.005		Drawn By	Scale
		<u>WH</u>	
		Date Drawn	<u>7-26-09</u>
Material		Alloy	Customer