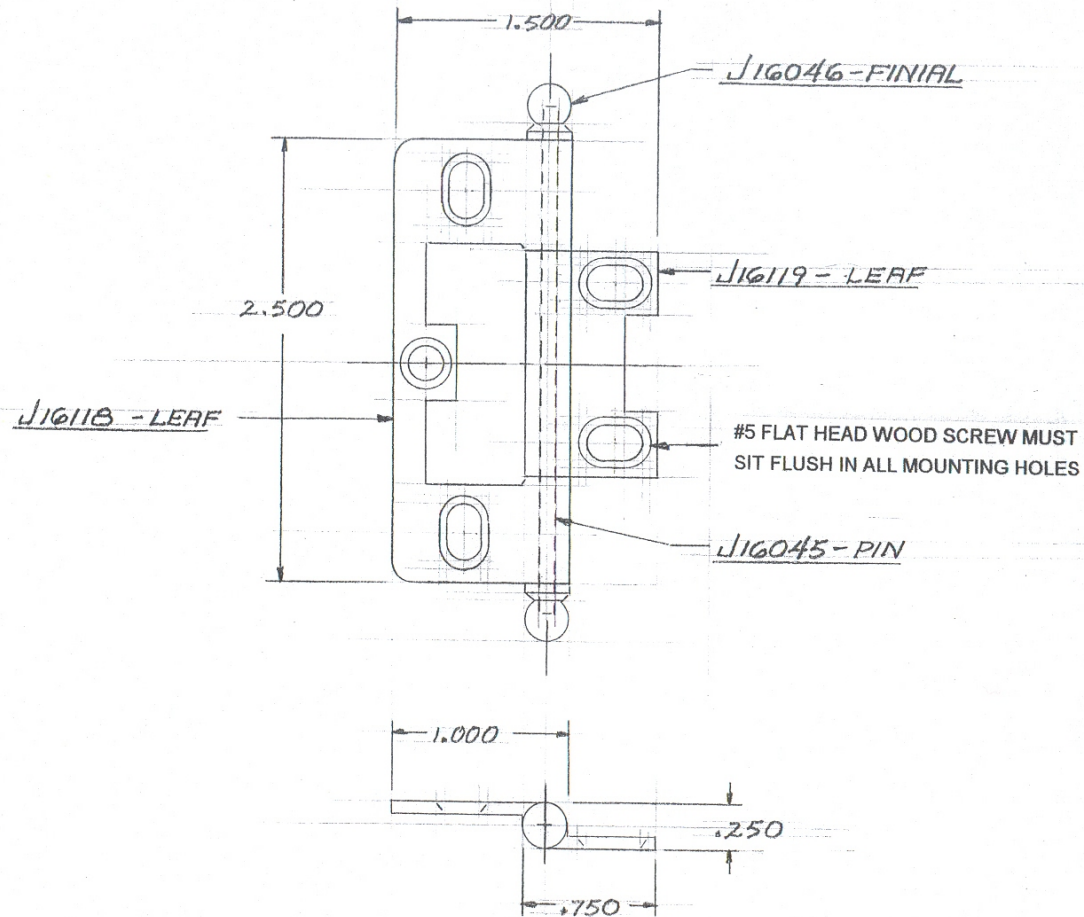


X-Number

Print No: J16121



J16118-LEAF

J16042 - SIMILAR (STAMPED)

NOTICE: Jamestown Furniture Hardware Corp. claims proprietary rights in the information disclosed on this drawing. It is issued in confidence for engineering only and may not be reproduced or used to manufacture anything shown herein without direct written permission from Jamestown Furniture Hardware Corp.

Revisions	<u>Tolerance Unless Otherwise Specified</u>		Jamestown FURNITURE HARDWARE CORP. 137 Water St., Jamestown, N.Y. 14701 Phone: 716-664-4321 · Fax: 716-664-4309	
	Cast Brass: ±1/32	Zinc/Brass Die Cast: .XX±.010 .XXX±.005		<u>Description</u> HINGE ASSEMBLY
	Sheet Metal/Turnings/Extrusions FRACTIONS ±1/64 .XX±.010 .XXX±.005			<u>CAD Print No.</u> J16121
	Forging: FRACTIONS ±1/64 .XX±.010 .XXX±.005			<u>Date Drawn</u> 1-26-09
	<u>Drawn By</u> WH	<u>Scale</u>		<u>Customer</u>
<u>Material</u>		<u>Alloy</u>		