

UNDER-COUNTER ICE MAKER

UR15IM20RS (RIGHT DOOR SWING)
UL15IM20RS (LEFT DOOR SWING)

Featuring IQ-Touch™ Electronic Controls



PRODUCT DIMENSIONS

Height (Adjustable)	33-3/4" – 34-3/4"
Width	14-7/8"
Depth (Including Handle)	26-3/4"

MORE EASY-TO-USE FEATURES

VERSATILE INSTALLATION OPTIONS

Can be used freestanding or under-counter.

PLATINUM STAR® LIMITED WARRANTY

Our exclusive limited warranty that includes three year coverage on parts and one year on labor¹.

FACTORY INSTALLED DRAIN PUMP

This ice maker is easy to install, unlike some that require installation of a separate accessory drain pump kit

ECO MODE

Slows ice production and saves approximately 23% of water and electric usage.

DELAY MODE

Suspends ice production for 2, 4, 6, or 8 hours or days. Perfect during sleeping hours, or during the week for your weekend vacation home.

A.D.A. COMPLIANT

When properly installed, this model is A.D.A.-qualified based on the United States Access Board's A.D.A./A.B.A. Accessibility Guidelines and the Department of Justice's 2010 A.D.A. Standards for Accessible Design.

Available in:



Stainless
(S)

SIGNATURE FEATURES



LARGE CAPACITY

Stores up to 30 pounds of ice cubes — and makes over 34 pounds of ice in a 24-hour period.



CRYSTAL-CLEAR ICE CUBES

Makes crystal-clear ice perfect for entertaining.



INTEGRATED CONTROLS

Controls are on the top of the door — so they're easy to set when needed, and hidden from view when the door is closed.



LOW MAINTENANCE

Has a cleaning mode and self-defrosts.

¹Eligibility based on product registration with Electrolux North America within 60 days of purchase. Products must have been purchased on or after July 1, 2013. Coverage includes material parts for 3 years and labor for 1 year.

UNDER-COUNTER ICE MAKER

UR15IM20RS (RIGHT DOOR SWING)
UL15IM20RS (LEFT DOOR SWING)



15" UNDER-COUNTER ICE MAKER

Capacity	Up to 30 Lbs.
Installation Type	Built-In / Freestanding

FEATURES

IQ-Touch™ Electronic Controls	Yes
Daily Ice Production	Over 34 Lbs.
Clear Ice Cubes	Yes
Ice Cube Size	3/4"
Ice Cubes Produced per Cycle	130
3-Step Self-Cleaning Process	Yes
Self-Cleaning of Mineral Deposits	Yes
Factory Installed Drain Pump	Yes
Frost-Free Performance	Yes

ADDITIONAL FEATURES

Signature Soft-Arc Door and Handle Design	Yes
Luxury-Close™ Door	Yes
Adjustable Leveling Legs	4
ECO Mode	Yes
Delay Mode	Yes
Cleaning Mode	Yes
A.D.A. Compliant*	Yes

ACCESSORIES

Ice Scoop	Included
Electrolux ICON® Handle Kit – PN# 5304503432	Optional

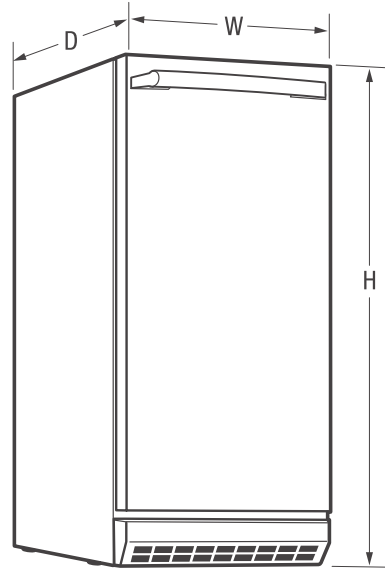
SPECIFICATIONS

Color –	
Stainless Steel	S
Power Supply/Water Inlet Location	Left Bottom Rear
Voltage Rating	120V/60 Hz
Connected Load (kW Rating) @ 120 Volts [†]	0.48
Minimum Circuit Required (Amps)	15A
Gravity Assisted Drain	Required
Shipping Weight (Approx.)	105 Lbs.

*When properly installed, this model is A.D.A.-qualified based on the United States Access Board's A.D.A./A.B.A. Accessibility Guidelines and the Department of Justice's 2010 A.D.A. Standards for Accessible Design.

[†]For use on adequately wired 120V, dedicated circuit having 2-wire service with a separate ground wire. Appliance must be grounded for safe operation.

NOTE: Always consult local and national electric and plumbing codes. Refer to Product Installation Guide for detailed installation instructions on the web at electroluxappliances.com. Specifications subject to change.



PRODUCT DIMENSIONS

Height (Adjustable)	33-3/4" – 34-3/4"
Width	14-7/8"
Depth (Including Rear Extrusion) (with Door Open 90°)	24" 37-3/4"

Electrolux Major Appliances, N.A.

USA • 10200 David Taylor Drive • Charlotte, NC 28262 • 1-877-4electrolux (1-877-435-3287) • electroluxappliances.com
CANADA • 5855 Terry Fox Way • Mississauga, ON L5V 3E4 • 1-800-265-8352 • electroluxappliances.ca

UR15IM20R 10/15

© 2015 Electrolux Home Products, Inc.



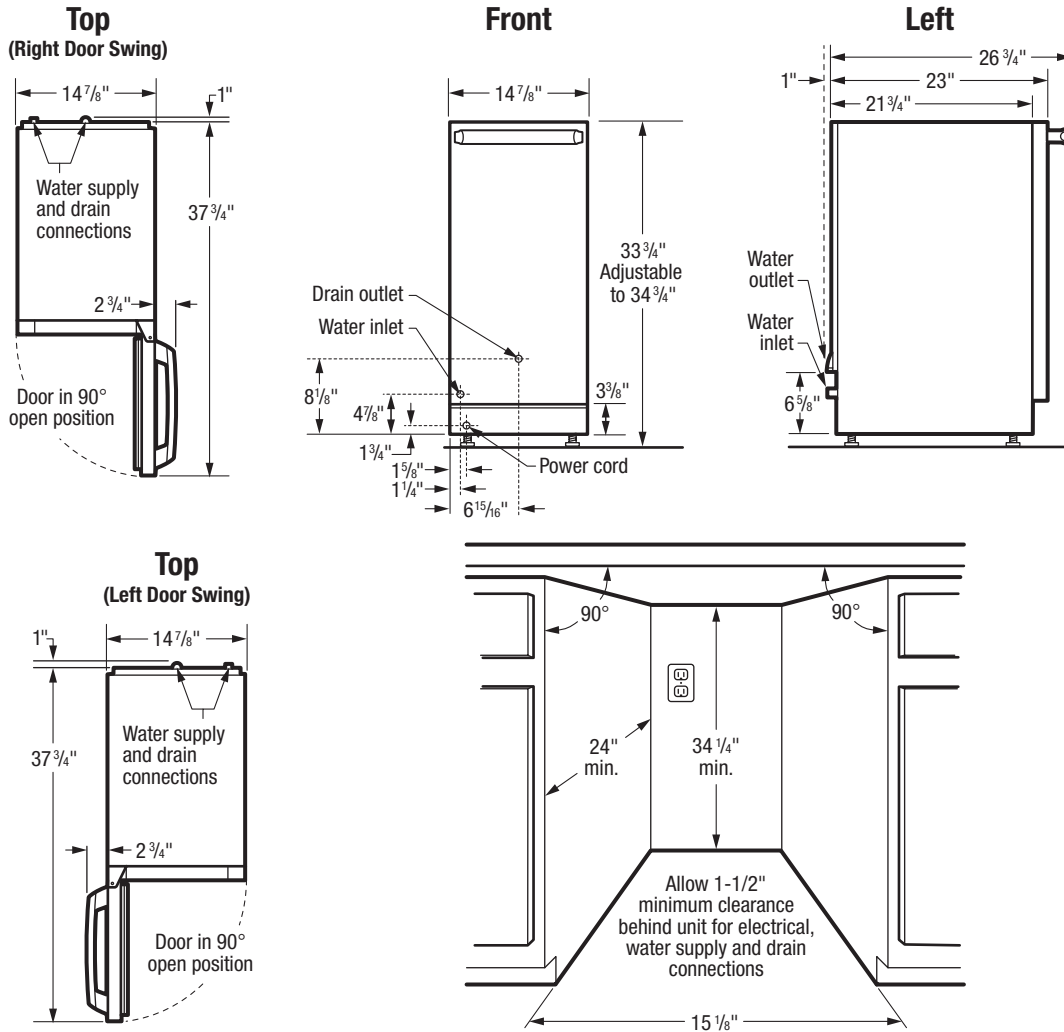
High standards of quality at Electrolux Home Products, Inc. mean we are constantly working to improve our products. We reserve the right to change specifications or discontinue models without notice.

UNDER-COUNTER ICE MAKER



UR15IM20RS (RIGHT DOOR SWING)

UL15IM20RS (LEFT DOOR SWING)



Under-Counter Ice Maker Specifications

- Product Weight – 100 Lbs.
- Voltage Rating – 120V/60Hz/15 Amps
- Connected Load (kW Rating) @ 115 Volts = 0.48 kW
(For use on adequately wired 120V, dedicated circuit having 2-wire service with a separate ground wire. Appliance must be grounded for safe operation.)
- Amps @ 120V = 1.0A
- Electrical cable supplied.
- Always consult local and national electric and plumbing codes.
- Unit is designed for either freestanding or built-in, under-counter installation with right or left door swing.
- Built-in, under-counter installation does not require additional airspace for top, sides or rear of unit.
- Proper built-in, under-counter installation requires that both electrical outlet and plug be completely recessed to ensure unit will fit flush against rear wall.
- To allow for ease of installation and removal, it is recommended that cabinet rough opening dimensions be increased by at least 1/4" over product's dimensions.
- For proper ventilation, unit can NOT be installed behind closed doors; front grille MUST remain unobstructed.
- Must be positioned on flat, level surface, capable of supporting entire weight when fully loaded.
- Leveling legs supplied to adjust height and level unit.
- Do not position unit near any heat source to ensure optimum performance.
- Unit requires zero clearance when installing flush with cabinet or wall.
- When installing against cabinet or wall that extends beyond front edge of unit, 2-3/4" minimum handle clearance required to allow for 90° door swing, providing sliding shelves with necessary clearance.

Note: For planning purposes only. Refer to Product Installation Guide on the web at electroluxappliances.com for detailed instructions.

Optional Accessories

- Electrolux ICON® Handle Kit – (PN# 5304503432).

Electrolux Major Appliances, N.A.

USA • 10200 David Taylor Drive • Charlotte, NC 28262 • 1-877-4electrolux (1-877-435-3287) • electroluxappliances.com
 CANADA • 5855 Terry Fox Way • Mississauga, ON L5V 3E4 • 1-800-265-8352 • electroluxappliances.ca

UR15IM20R 10/15

© 2015 Electrolux Home Products, Inc.



High standards of quality at Electrolux Home Products, Inc. mean we are constantly working to improve our products. We reserve the right to change specifications or discontinue models without notice.