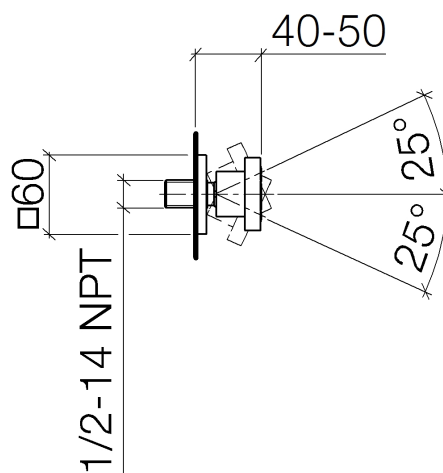




Product specifications

- Ø 2-1/8"
- swivels 25°
- Stream: Rain
- Descaling system
- Flange 2-3/8" x 2-3/8"
- 1/2" connection
- Water flow rate limited to max. 1.3 gpm



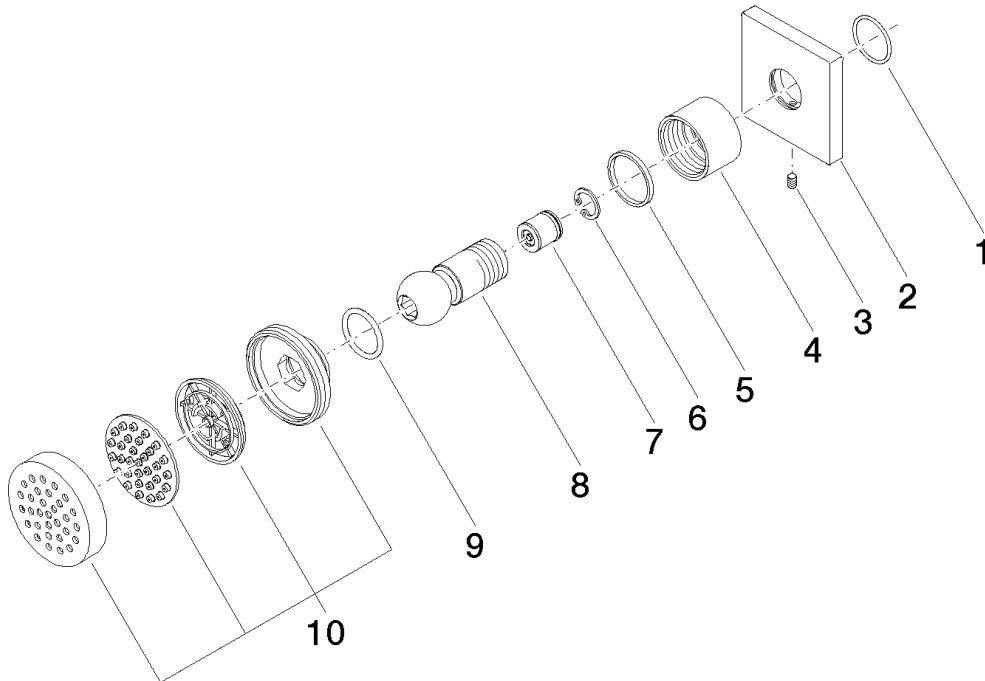
Surfaces

- chrome 28518782-00
- matt platinum 28518782-06

Accessories required

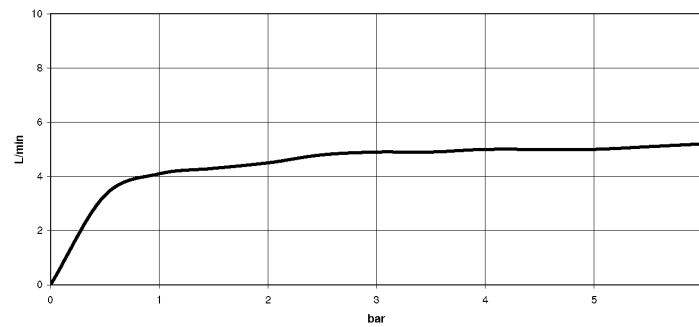
- Rough-in adapter; 35 080 970

Exploded assembly drawing



Order quantity

| No. | Article number | Name | Installation quantity |
|------------|-----------------------|-----------------------|------------------------------|
| 1 | 09141009890 | seal | 1 |
| 2 | 092798003ff | rosette | 1 |
| 3 | 09311104890 | pin | 1 |
| 4 | 092330026ff | nut | 1 |
| 5 | 09141501090 | ring | 1 |
| 6 | 09160101490 | ring | 1 |
| 7 | 09230104890 | back-flow preventer | 1 |
| 8 | 092140016ff | connection | 1 |
| 9 | 09141001590 | seal | 1 |
| 10 | 90120502700ff | casing (completely) | 1 |



Trajectory Diagram

