

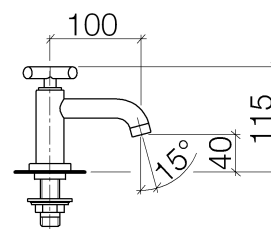
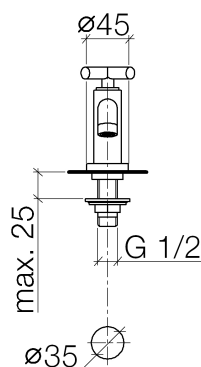


### Product specifications

#### • 3-7/8" Projection

- Fixed spout
- Round aerated stream
- Total height 4-1/2"
- Height to aerator/spout outlet 1-5/8"
- 1-3/8" hole diameter
- 1/2" connection
- Flange diameter 1-3/4"
- Water flow rate limited to max. 1.2 gpm
- low lead compliant

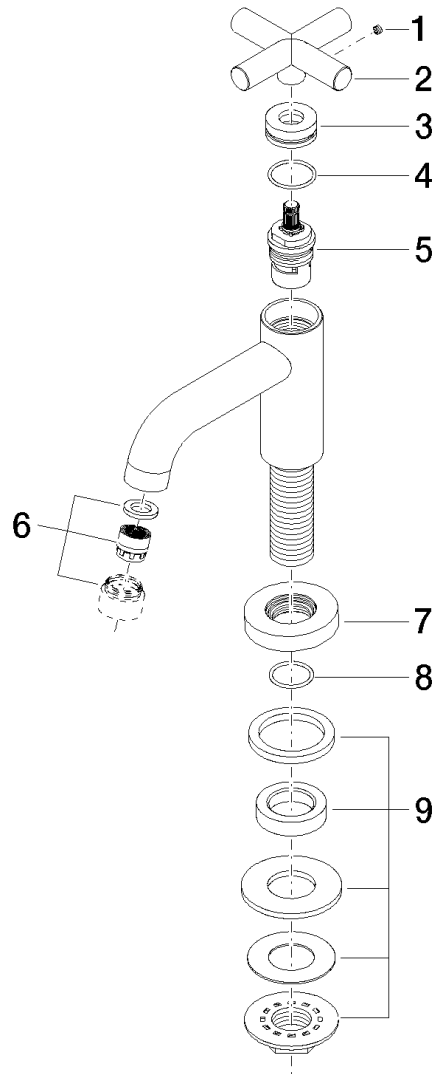
**(ADA)**



### Surfaces

- |                 |                 |
|-----------------|-----------------|
| • chrome        | 17500892-000010 |
| • matt platinum | 17500892-060010 |
| • platinum      | 17500892-080010 |
| • matt black    | 17500892-330010 |

**Exploded assembly drawing**



**Order quantity**

<b>No.</b>	<b>Article number</b>	<b>Name</b>	<b>Installation quantity</b>
1	09311105590	pin	1
2	092089011ff	handle	1
3	092102089ff	sleeve	1
4	09141008590	seal	1
5	9090031350090	top	1
6	90230106803ff	aerator	1
7	092789106ff	rosette	1
8	09141003290	seal	1
9	0423100108890	fixing set	1

Bath & Spa

**Pillar tap cold water only**

Article number: 17500892ff0010

